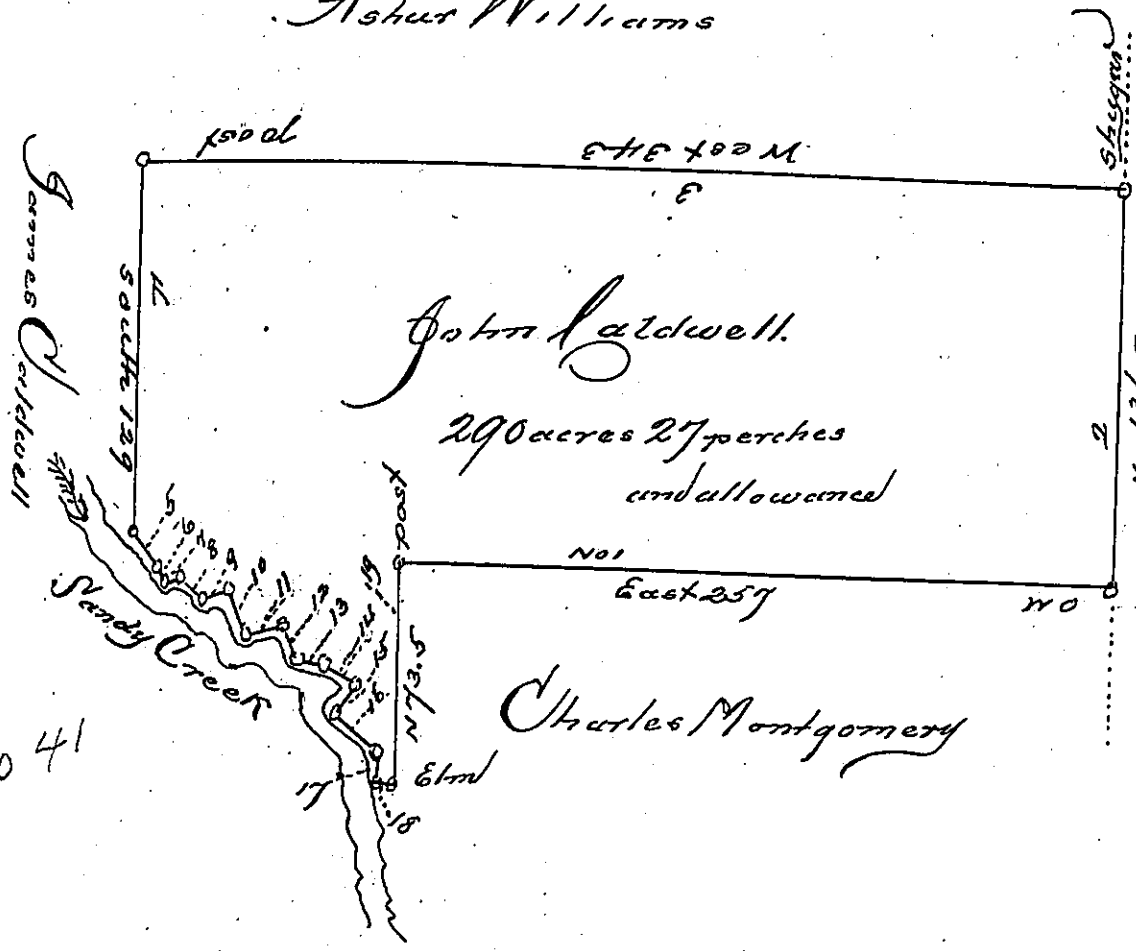


Ashur Williams Scale of eighty to an inch



Courses & Distances		
No 1	East	257
2	North	136.5
3	West	343
4	South	129
5	S 34 E	15
6	S 61 E	4
7	East	4
8	S 45 E	7.7
9	N 74 E	10
10	S 20 E	18
11	N 67 E	12
12	S 26 E	12
13	S 78 E	8
14	S 55 E	12
15	S 29 W	10
16	S 50 E	21.5
17	S 6 1/2 W	10.1
18	East	4.5
19	North	73.5

This is a draft of a tract of land situated in Sandy Creek Township Mercer County, surveyed the tenth day of September A.D. 1828, in pursuance of a Warrant granted to John Caldwell on the fourteenth day of April A.D. 1828, situated Sandy Creek and bounded as above described, containing two hundred and ninety acres and twenty seven perches and the usual allowance for Roads.

A. Brown, S. J.  
Mercer County

Gabriel Hiester Esq.  
Surveyor General.

Note this is part of a larger tract, owned by two brothers, and the Creek is an agreed line between them which occasions so many Courses

A. B.

This tract is well improved and no adverse claim known to me.

IN TESTIMONY that the above is a copy of the original remaining on file in the Department of Internal Affairs of Pennsylvania, made conformably to an Act of Assembly approved the 16th day of February, 1833, I have hereunto set my Hand and caused the Seal of said Department to be affixed at Harrisburg, this twenty-ninth day of April, 1904.

George P. Brown  
Secretary of Internal Affairs.